

Installation and Programming Instructions for PhoneLink 500



Model 16-2050



American Access Systems, Inc.

YOUR PARTNER IN ACCESS CONTROL

Table of Contents

| | |
|---|-----------|
| FCC REQUIREMENTS | 4 |
| DOC REQUIREMENTS | 5 |
| Important Tips | 6 |
| Installation | 6 |
| PhoneLink 500 Keypad | 13 |
| GOODBEEPS & ERRORBEEPS | 13 |
| UNIT RESET | 14 |
| PROGRAMMING | 15 |
| Sub-Mode 1 (Program Relay A Access Codes) | 16 |
| Sub-Mode 2 (Delete Codes) | 16 |
| Sub-Mode 3 (Change MASTER CODE) | 17 |
| Sub-Mode 4 (Set Sleep Code and/or Latch Code and/or Call Forwarding) | 17 |
| Set Latch Code: | 18 |
| Sub-Mode 5 (Set One Shot Code) | 19 |
| Sub-Mode 6 (Set Relay Output Times) | 19 |
| Sub-Mode 7 (Program Relay B Access Codes) | 20 |
| Sub-Mode 8 (Enable/Disable 3 Strikes-You're Out) | 20 |
| Sub-Mode 9 (Program Event Input) | 21 |
| Sub-Mode 0 (Erase all codes) | 22 |
| Support | 23 |

AAS 2-Year Limited Warranty

What item(s) this warranty applies to:

American Access Systems "PhoneLink 500" line of access controls.

What is covered:

Any defect in materials or workmanship.

For how long:

Two years from date of purchase.

What we will do:

If your AAS product is defective and returned within 2 years of the date of purchase, we will repair it or, at our option, replace it at no charge to you. If we repair your AAS product, we may use new or reconditioned parts. If we choose to replace your AAS product, we may replace it with a new or reconditioned one of the same or similar design. The repair or replacement will be warranted for (a) 90 days or (b) the remainder of the original two year warranty period, whichever is longer.

Limitations:

Implied warranties, including those of fitness for a particular purpose and merchant ability (an unwritten warranty that the product is fit for ordinary use), are limited to two years from date of purchase. We will not pay for loss of time, inconvenience, loss of use of your AAS product, service calls, or property damage caused by your AAS product or its failure to work, or any other incidental or consequential damages. Some states do not allow limitations on how long an implied warranty lasts or the exclusion or limitation of incidental or consequential damages, so the above exclusions or limitations may not apply to you.

What we ask you to do:

To get warranty service for your AAS product, you must provide proof of the date of purchase. Contact the original dealer or installer of the product and return your AAS product along with the receipt to them. If you have problems locating the dealer or installer contact American Access Systems at (303) 799-9757 and we will direct you to an authorized dealer or distributor of American Access Systems products. If you ship your AAS product, you must prepay all shipping costs. We suggest that you retain your original packing material in the event you need to ship your AAS product. On return, include your name, address, phone number, proof of date of purchase, and a brief description of the operating problem.

What this warranty does not cover:

This warranty does not cover defects resulting from accidents, damage while in transit, alterations, unauthorized repair, failure to follow instructions, misuse, fire, flood, and acts of God. Nor do we warrant your AAS product to be compatible with any particular external device or peripheral. If your warranty has expired on your AAS product or if your product is NOT covered contact your dealer or installer for advice on whether we will repair your AAS product and other repair information, including estimated repair costs and other charges. We, at our option, may replace rather than repair your AAS product with a new or similar design if the damage to the unit is severe or extensive. This warranty is the only one we give on this product, and it sets forth all our responsibilities regarding your AAS product. There are no other express warranties.

State Law rights:

This warranty gives you specific legal rights, and you may also have other rights which vary from state to state.

**AMERICAN ACCESS SYSTEMS, INC.
7079 SOUTH JORDAN ROAD / UNIT 6
CENTENNIAL, CO. 80112
PH: (303) 799-9757
FAX: (303) 799-9756**

FCC REQUIREMENTS

1. This equipment complies with Part 68 of the Federal Communications Commission Rules. On the inside panel of this equipment is a label that contains, among other information, the FCC registration number, Facility Interface code (FIC) and Service Order Code (SOC). This information must be provided to the telephone company.

Registration No: US: AAAOT01B30027

FIC: 02LS2

SOC: 9.0Y

USOC: RJ11C

2. This device complies with Part 15 of the FCC rules. Operation is subject to the following conditions:
1) This device may not cause harmful interference and 2) This device must accept any interference received, including interference that may cause undesired operation. Modification of the device by the user may cause the device to operate in violation of the FCC Rules.
3. The REN is used to determine the quantity of devices that may be connected to the telephone line. Excessive RENs on the telephone line may result in the devices not ringing in response to an incoming call. Typically, the sum of RENs should not exceed five (5.0). To be certain of the number of devices that may be connected to a line (as determined by the total RENs) contact the local telephone company.
4. An FCC-compliant telephone and modular plug is provided with this equipment. This equipment is designed to be connected to the telephone network or premises wiring using a compatible modular jack which is Part 68 compliant. See installation instructions for details.
5. If this equipment causes harm to the telephone network, the telephone company will notify you in advance that temporary discontinuance of service may be required. But, if advance notice is not practical, the telephone company will notify the customer as soon as possible. Also, you will be advised of your right to file a complaint with the FCC if you believe it is necessary.
6. The telephone company may make changes in its facilities, equipment, operations, or procedures that could affect the operation of the equipment. If this happens, the telephone company will provide advance notice in order for you to make necessary modifications in order to maintain uninterrupted service.
7. If trouble is experienced with the PhoneLink unit please contact American Access Systems, Inc. 1-800-541-5677. If the equipment is causing harm to the network, the telephone company may request you to remove the equipment from the network until the problem is resolved.
8. No repairs are to be made by you. Repairs are to be made only by American Access Systems, Inc. or its licensees. Unauthorized repairs void registration and warranty.
9. This equipment cannot be used on public coin service provided by the telephone company. Connection to Party Line Service is subject to state tariffs. (Contact the state public utility commission, public service commission or corporation commission for information.)

DOC REQUIREMENTS

Equipment Attachment Limitations

Notice: This equipment meets telecommunications network protective, operational and safety requirements as prescribed in the appropriate Terminal Equipment Technical Requirements Document(s). This is confirmed by marking the equipment with the Industry Canada certification number. The Department does not guarantee the equipment will operate to the user's satisfaction.

Before installing this equipment, users should ensure that it is permissible to be connected to the facilities of the local telecommunications company. The equipment must also be installed using an acceptable method of connection. The customer should be aware that compliance with the above conditions may not prevent degradation of service in some situations.

Repairs to certified equipment should be coordinated by a representative designated by the supplier. Any repairs or alterations made by the user to this equipment, or equipment malfunctions, may give the telecommunications company cause to request the user to disconnect the equipment.

Users should ensure for their own protection that the electrical ground connections of the power utility, telephone lines and internal metallic water pipe system, if present, are connected together. This precaution may be particularly important in rural areas. **Caution:** Users should not attempt to make such connections themselves, but should contact the appropriate electric inspection authority, or electrician, as appropriate.

Notice: The Ringer Equivalency Number (REN) assigned to each terminal device provides an indication of the maximum number of terminals allowed to be connected to a telephone interface. The termination on an interface may consist of any combination of devices subject only to the requirement that the sum of the Ringer Equivalency Numbers of all the devices does not exceed five.

The abbreviation, IC, before the registration number signifies that registration was performed based on a Declaration of Conformity indicating that Industry Canada technical specifications were met. It does not imply that Industry Canada approved the equipment.

Important Tips

1. Your PhoneLink 500 contains static sensitive components. Proper grounding techniques should be exercised during installation to prevent damage to circuit board.
2. Additional surge protection is highly recommended to provide extra lightning protection.
3. **Electrical Safety Advisory Notice:**
American Access Systems, Inc. recommends the installation of an AC surge arrester in the AC outlet from which the equipment is powered.
4. Please follow the instructions in this manual carefully to prevent problems during installation and programming.
5. American Access Systems cannot guarantee compatibility with all telephones and accessories (answer machines, call id, etc.)

Service Center:
American Access Systems, Inc.
7079 S. Jordan Rd. # 6
Centennial, CO 80112
Phone: 1- 800- 541- 5677

Installation

1. Proper wire size is necessary for a good and trouble-free installation. Follow the tables below for your installation.

| DC Power Wire Size | Distance (in feet) | AC Power Wire Size |
|--------------------|--------------------|--------------------|
| 18 AWG | 30' or less | 18 AWG |
| 18 AWG | 30' to 75' | 16 AWG |
| 18 AWG | 75' to 150' | 12 AWG |
| 16 AWG | 150' to 250' | 10 AWG |
| 12 AWG | 250' to 500" | N/A |

| Wiring from Bypass Board | Type of Wire | Recommended |
|---|--------------------------------------|----------------------------|
| To Telco Box | 18 to 24 Gauge twisted pair shielded | Belden #9502 or equivalent |
| To PhoneLink 500 Controller | 18 to 24 Gauge twisted pair shielded | Belden #9502 or equivalent |
| Wiring from PhoneLink 500 | Type of Wire | Recommended |
| To the 12V AC/DC power source | 2 conductor cable | 18 gauge stranded |
| To gate operator, door strike, or magnetic strike | 2 conductor cable | Device manufacturer specs |
| To strike power supply (if used) | 2 conductor cable | Device manufacturer specs |
| To earth ground | 12 awg copper wire | Belden #9912 or equivalent |

Mounting the unit to an AAS gooseneck pedestal (18-001) or double height gooseneck (18-003).

Locate the four carriage bolts and four hex nuts found inside the unit box. Place the unit up to the pedestal flange and insert the four carriage bolts from the backside. Secure the unit to the pedestal.

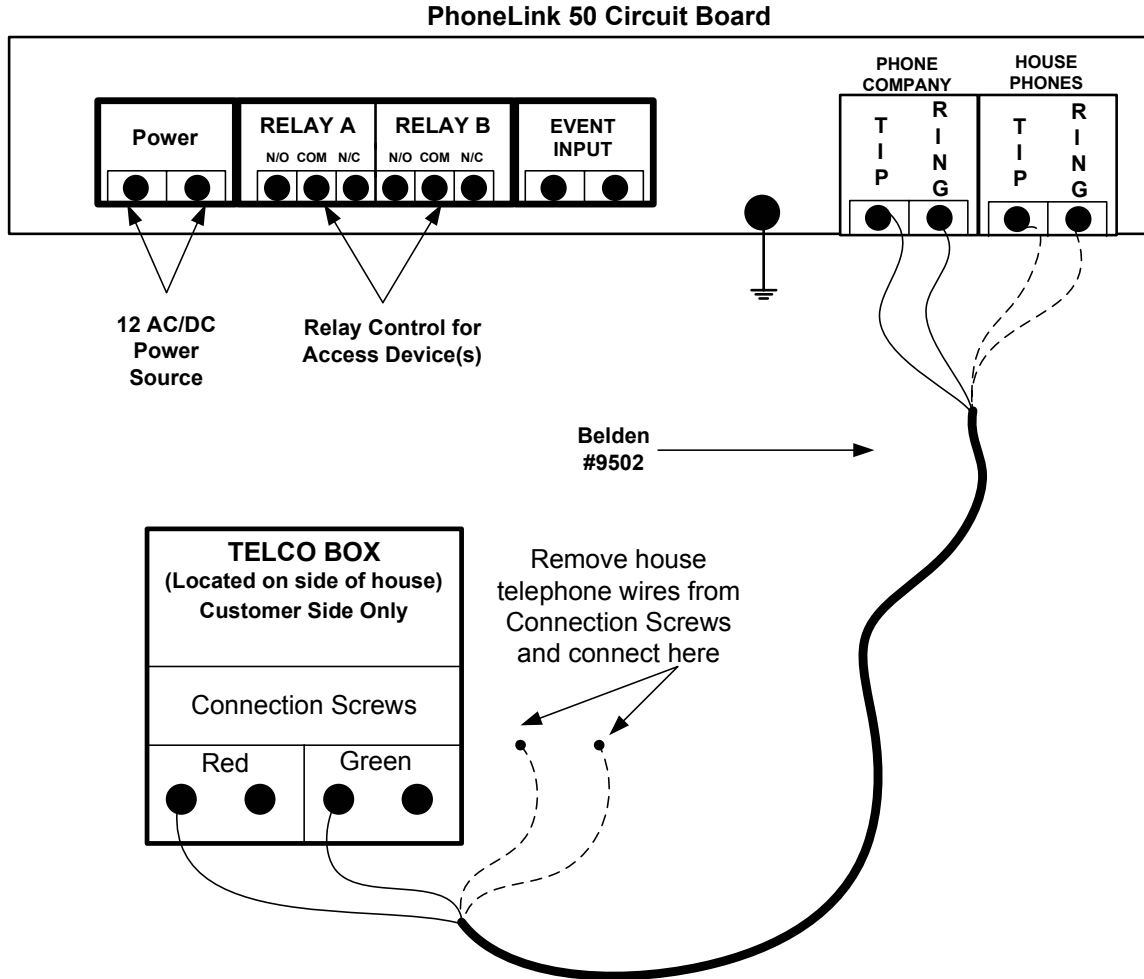
(SYSTEM CONNECTIONS)

Typical wiring diagram for your unit is presented on page 9 . Usually, you will be interfacing the unit to the Phone Company or Telco Box. Carefully study the diagram for a proper interface to your telephone line.

1. The PhoneLink comes with an on-board Bypass Switch. If the PhoneLink 500 is struck by lightning or some other heavy electrical surge the end user can simply switch to BYPASS to resume normal telephone operation.
2. Both diagrams show a RJ-12 test port on the PhoneLink circuit board. This can be used by field technicians to trouble-shoot problems by plugging a standard RJ-11 jack phone into the test jack. This is very helpful when working alone.
3. Both diagrams also show an EVENT terminal block on the PhoneLink circuit board. American Access recommends using this feature to switch the night lights using a dry-contact device such as a loop detector, electric eye, motion sensor etc. More information can be found on page 20 under programming **Event Input**.

4. The PhoneLink 500 can be installed to a PBX or Key phone system. Connect two wires from a UNUSED CO port of the PBX system to To Phones terminal block on the PhoneLink 500 circuit board. Move jumper from Normal to PBX then press and release the SETUP button. (See page 10 for PBX and SETUP button locations.)
5. Connect your Access Device (gate operator, door strike, etc.) to Relay A or Relay B on the PhoneLink 500 (see Diagram on page 10 for relay location). In most installs this relay will connect to the OPEN circuit of a gate operator or connect in series with a DOOR STRIKE power lead. Consult your access device documentation for proper hook-up.
6. Relay Terminals are:
 - Com – Relay Common
 - N/C - Relay Normally Closed
 - N/O - Relay Normally Open
7. **Important:** If you are using a Power Source other than the 12VAC (20VA) adapter provided, it **MUST** have a current rating of 2 amps or greater. If using a 12 volt DC gate operator (such as a Apollo, Gto, or U.S. Automatics) use the battery for power, not the operator control board.

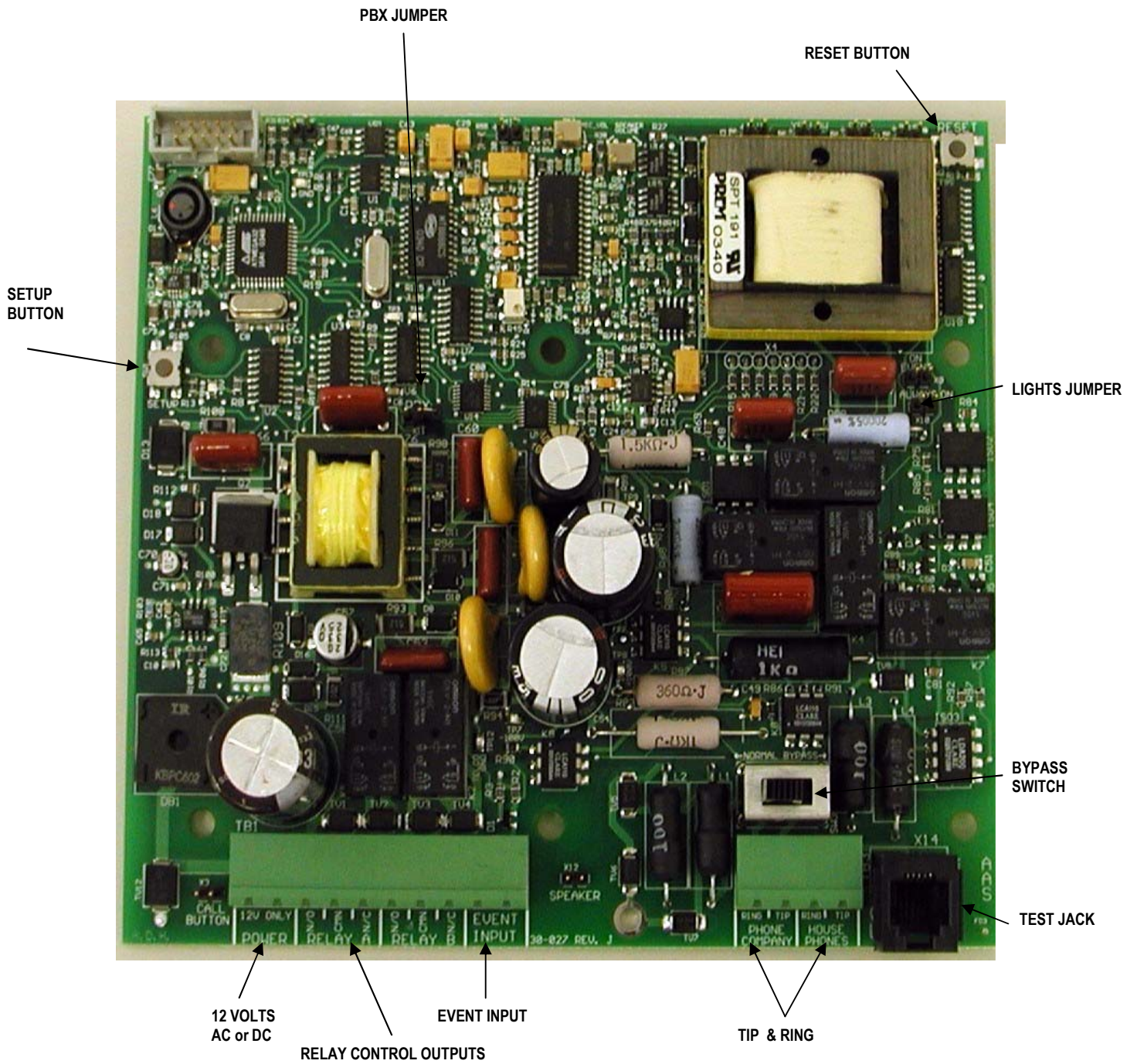
Standard Hook-up Diagram for PhoneLink 50 with built in Bypass Switch



| PhoneLink 50 Circuit Board | Bypass Switch | Telco Box |
|----------------------------|---------------|----------------------|
| <u>Phone Company</u> | --- | <u>Phone Company</u> |
| <u>To Phones</u> | --- | <u>House Phones</u> |

↓
Earth Ground

30-027B Circuit Board Layout



PhoneLink 500 System Intercom

Operation:

A visitor desiring access will push the call button on the outside control station, causing a special ring signal to be sent to the inside phone. Picking up the phone before 10 rings are completed will establish *intercom* mode between the house and the control station. The control station will respond with a *GOOD BEEP*. At this point pressing ** or *1 on the phone will activate RELAY A to open the gate. Hanging up the phone terminates intercom mode. If the house phone is already ringing because of a call from the Phone Company when the call button is pressed a busy signal is sent to the control station speaker.

Note: To program the PhoneLink from your telephone keypad see “Calling a Gate” below.

Call Waiting:

If the phone is already in use when the call button is pressed, a tone (similar to the Phone Company “call waiting tone”) will be heard, indicating the control station is calling. To place the Phone Company line on hold press the “#” key within 15 seconds of the first tone. The control station will respond with a *GOOD BEEP* and establish intercom mode between the house and the control station.

The “#” key can be used to switch back and forth between the Phone Company and intercom mode. However, the control station will only stay on hold for 15 seconds before it resets to idle mode.

If the Phone Company tries to ring the house while the system is in intercom mode, the same call waiting tone will be heard. To switch to the incoming call press the “#” key.

Calling an Outside Station:

A PhoneLink outside call station can be accessed from a house phone by lifting its receiver and pressing # 9. The unit will respond with 3 beeps when connected. (NOTE: after fifteen seconds with no key presses the outside station will not respond and the call must be re-initiated). After the beeps, gate commands can be issued and keypad programming functions can be implemented from the telephone's keypad.

Gate Commands:

First, lift the phone receiver and press **# 9**. Then, after the beeps, enter one of the following commands.

- * **1 (or) **** Activates (cycles) **RELAY A**
- * **2** Activates (cycles) **RELAY B**
- * **3** Enables audio communication (**INTERCOM mode**)
- * **#** Toggles the **LATCH** mode on or off.
A double beep after the command indicates 'gate closed'
A single beep indicates 'gate presently open'.
- * **9** Toggles **SLEEP** mode on or off.
A double beep after the command indicates 'not in sleep mode'.
A single beep indicates 'sleep mode is presently active'.
Activating sleep mode while latch mode is on turns it off.
Note: A four digit sleep code *MUST* be programmed into the PhoneLink before using the sleep command. (see page 17)
- * **5** Toggles **ONE-SHOT-ENABLE** mode on or off.
A double beep after the command indicates **One Shot Enable** is inactive.
A single beep indicates it is active.

Hanging up the phone terminates its command and communications connection with the PhoneLink.

NOTES: The PhoneLink's telephone control and communications functions and its code keypad operations are mutually exclusive.

- During entry of a four digit keypad access code the CALL button and all communications between the House Phone and PhoneLink are disabled.

- Likewise, if the house phone and PhoneLink are in Command or Communications mode or if the CALL button is pressed, the keypad will be disabled until the system is back in idle mode.

- The **Event** Input's REMOTE OPEN mode is not disabled in any operational mode except programming.

PhoneLink 500 Keypad

ACCESS & FUNCTION CODES

Depending on which model you have, your unit may be programmed with 500 (4 digit) access codes. There are two different types of codes, access codes & function codes. Although the number of access codes will vary with each model, the number of function codes is always 4. **These codes can be programmed with the PhoneLink keypad and/or your Telephone keypad(See calling a gate).**

FUNCTION CODES

"MASTER CODE"

This code is a programmable four digit code used for gaining access to the program mode. **It does not activate the control relay.** The factory default master code is 1 2 5 1.

"LATCH CODE"

This code is a programmable four digit code used to Activate relay A. This code will be used to hold open a gate or door.

"SLEEP CODE"

This code is a programmable four digit code which, when entered, will disable all standard access codes. When the "*SLEEP CODE*" is entered again the unit will be enabled. An override code is provided.

"ONE SHOT CODE"

This code is a programmable four digit code that disables itself after one use. The user can enable this code for reuse using the keypad or telephone.

GOODBEEPS & ERRORBEEPS

Your unit will beep each time a key is pressed. The "*" key serves as the clear key and a double beep will be heard when this key is pressed. A "*GOODBEEP*"

is represented by an oscillating high tone. An *"ERROR BEEP"* is represented by a single low tone.

THE RED & YELLOW LED's

Two different colored LED's are in the face of the unit. The red LED will light during the duration of the relay(s) activation period. The yellow LED will light while the unit is in the program mode. During memory erasure or setup the LED's will flash.

RESETTING THE UNIT

Your unit provides 2 different types of resets, a **Unit Reset**, and a **Master Reset**.

A **Master Reset** should be utilized in the event that you lose or forget your master code or if the unit is in the Latch or Sleep mode and the Latch or Sleep code is lost or forgotten. When a **Unit Reset** is performed, the master code will be set back to 1 2 5 1.

A Unit Reset is provided to reset the unit back to the initial factory state. After a **Unit Reset** has been performed the unit will *DELETE ALL ACCESS & FUNCTION CODES* and the master code will be set back to 1 2 5 1.

MASTER RESET

Follow these steps precisely. If you make an error, the unit will *ERROR* and you will have to start over.

Press and hold the RESET BUTTON, then press and release the SETUP BUTTON. Release the RESET BUTTON and the unit will go into a endless tone cycle.

Enter * * * from the keypad. The unit will go into a endless tone cycle. Press and release the SETUP button and the master code will be set back to **1 2 5 1**. If you previously were in the sleep or latch mode, the unit will be brought back to normal idle mode.

UNIT RESET

(!!!! WARNING: ALL CODES WILL BE DELETED FROM MEMORY !!!!)

Press and hold the RESET BUTTON, then press and release the SETUP BUTTON. Release the RESET BUTTON and the unit will go into a endless tone cycle.

Enter **# * #** (The unit will respond with a *GOOD BEEP*)

Enter the *MASTER CODE* from the keypad. (The unit will flash the *LED's* several times and then go into an endless tone cycle)

Press and release SETUP BUTTON.

The idle mode

The idle mode is the normal mode of operation. When in this mode the unit sits and waits for data from the keypad. When in this mode you will have approximately 4 seconds between keypresses. If this time is exceeded, you will receive an *ERROR BEEP*.

The Program Mode

The program mode is the mode of operation in which you will enter, delete, or change your codes or set specific features of the unit. The program mode is accessed by entering the "*MASTER CODE*" from the keypad. You will receive a *GOOD BEEP* and the yellow *LED* will come on indicating that you are in the program mode. In this mode you will have approximately 30 seconds between key presses. If this time is exceeded, you will receive an *ERROR BEEP* and be exited from the program mode.

The * and # Keys

The ***** and **#** keys serve specific functions while in the idle or program mode. The ***** key is always the **Clear** key and a double beep will be heard when depressed. You should use this key if you make an entry error. The **#** key also serves as the clear key in the idle mode. In the program mode however, it serves as the exit key and will at any time when depressed, exit you from the program mode.

PROGRAMMING

A person desiring access to the program mode will enter the present *MASTER CODE*. If the master code is valid the yellow *LED* will come on and the you will be prompted with a *GOOD BEEP* to enter a number corresponding to a *SUB-MODE*.

Remember: MASTER CODE will not activate the control relay.

(*MASTER CODE*) + (Number corresponding to Sub-Mode).

Once in the program mode, you will have 30 seconds between keypresses or the unit will *ERROR* and exit the program mode. A person desiring to exit the program mode may do so by simply pressing the **#** key at any time. There are 10 different *SUB-MODES* to choose from. They are as follows:

SUB-MODE DESCRIPTION

- | | |
|---|---|
| 1 | Program Access Codes (Relay A) |
| 2 | Delete Codes |
| 3 | Change Master Code |
| 4 | Set Sleep Code and/or Latch Code and/or Call Forwarding |
| 5 | Set One Shot Code |
| 6 | Set Relay Output Times |
| 7 | Program Access Codes (Relay B) |
| 8 | Enable / Disable "3 Strikes-You're Out" |
| 9 | Program Event Input |
| 0 | Erase Memory |

Sub-Mode 1 (Program Relay A Access Codes)

To program new Relay A access codes enter the following;

(MASTER CODE) + 1 + (NEW CODE) + (NEXT NEW CODE)
etc..... (**#** to exit)

Should you make a code entry error, simply press the ***** key and enter the correct code. You may select any 4 digit code you wish. If you receive an *ERROR* after entry, you must select another code as it is already in use. The unit will respond with a *GOOD BEEP* with the acceptance of each new Relay A code. You may continue entering Relay A codes until you finish (Press **#**), or the memory becomes full. You will automatically be exited from the program mode if the memory reaches capacity. When memory is full you will not be able to enter this Sub-Mode and will receive an *ERROR* if entry is attempted.

Sub-Mode 2 (Delete Codes)

To delete codes enter the following;

(MASTER CODE) + 2 + (CODE TO BE DELETED)

Should you make an entry error, simply press the ***** key and enter the correct code. You may delete any access or function code that you wish with the

exception of the *MASTER CODE*. If the code you wish to delete is not found in memory, the unit will respond with an *ERROR* and wait for another code to be entered. A *GOOD BEEP* will be sounded once the code has been found and deleted. You may continue deleting codes until you finish (Press #).

Sub-Mode 3 (Change MASTER CODE)

To change your master code enter the following;

(present MASTER CODE) + 3 + (new MASTER CODE)

Should you make a code entry error, simply press the * key and enter the correct code. You may select any 4 digit master code you wish. If you receive an *ERROR*, you must select another code as it is already in use. The unit will respond with a *GOOD BEEP* with the acceptance of the new Master Code and you will be exited from the program mode. **MAKE SURE TO WRITE THE NEW MASTER CODE DOWN.**

Sub-Mode 4 (Set Sleep Code and/or Latch Code and/or Call Forwarding)

EXPLANATION: The sleep code used to disable all Relay A and function codes from the keypad. It also turns shuts off the *CALL* button on the intercom. This feature is most commonly used in applications where no entry is desired after hours. Relay B codes will still be valid from the keypad. By connecting both relays in parallel, managers may be assigned RelayB codes and still gain access. While in the *SLEEP MODE*, the yellow and red *LED's* will flash approximately once every 3 seconds. To initialize the system back to normal, simply re-enter the sleep code. Should you lose or forget your sleep code and the unit is in the sleep mode see the Unit Reset instructions on page 15.

NOTE: You can also Activate the sleep code with the telephone. (See intercom operating instructions.)

A. Set Sleep Code:

To program or change your sleep code enter the following;

(MASTER CODE) + 4 + 1 + SLEEP CODE

Should you make a code entry error, simply press the * key and enter the correct code. You may select any 4 digit sleep code you wish. If you receive an *ERROR*, you must select another code as it is already in use. The unit will

respond with a *GOOD BEEP* with the acceptance of the new Sleep Code and you will be exited from the program mode.

B. Set Latch Code:

EXPLANATION: The Latch Code Activates the state of the main relay (A) of the circuit board. The red LED will light if the relay is in the latched position. The latch code is useful in applications where the gate is desired to hold open. If the operator's close circuit is controlled by loops, timers, etc., they will be overridden by the latched state of the relay and the gate will hold open. An "OPEN - OVERRIDE" circuit must exist in the operator in order to utilize this function. If your gate cycles when this code is entered, your operator is not set up to utilize this function. Your local dealer or distributor should be able to assist you if you have any specific questions.

To program or change your latch code enter the following;

(MASTER CODE) + 4 + 2 + LATCH CODE

Should you make a code entry error, simply press the * key and enter the correct code. You may select any 4 digit latch code you wish. If you receive an ERROR, you must select another code as it is already in use. The unit will respond with a GOOD BEEP with the acceptance of the new Latch Code and you will be exited from the program mode. When the latch code is entered the RED Led will light and the gate will hold open. When the latch code is entered again the RED Led will go off and the gate will close. NOTE: On gates with a timer to close the "TIMED DURATION" starts when the latch code is released.

C. Set Call Forwarding:

Call Forwarding is located under Sub Mode 4 with Sleep and Latch modes as follows:

Sub Mode 4 (Call Forwarding)

- a) To program or change the phone number dialed, enter:
(MASTER CODE) + 4 + 3 (*status) + 2 + (Phone Number – 7, 10, or 11 digits)
- b) To disable call forwarding:
(MASTER CODE) + 4 + 3 (*status) + 0
- c) To enable call forwarding:
(MASTER CODE) + 4 + 3 (*status) + 1

*status:

Single beep = enabled

Double beep = disabled

Notes:

1. Pressing * will clear the phone number digits entered.
2. Pressing # will “enter” the phone number. A good beep will sound if 7, 10, or 11 digits have been entered when # is pressed. If not, a bad beep will sound and call forwarding will be disabled if it was enabled.
3. Digits can be entered until # is pressed. Any digits over 11 will be discarded and a bad beep will sound when # is pressed.
4. Call forwarding can only be enabled when there has been a valid phone number entered.

Sub-Mode 5 (Set One Shot Code)

EXPLANATION: This Mode is used to program a one-shot code, and to enable it or disable it. After the ONE-SHOT CODE is programmed in you must enable it after each use. **NOTE: The ONE-SHOT CODE must be programmed first.** After the 5 is pressed the enable/disable status is heard (one beep = enabled, two beeps = disabled) followed by a GOOD BEEP.

- a) To program or change the one-shot code enter:
(MASTER CODE) + 5 (*status) + 2 + (ONE-SHOT CODE)
- b) To disable the one-shot code enter:
(MASTER CODE) + 5 (*status) + 0
- c) To enable the one-shot code enter:
(MASTER CODE) + 5 (*status) + 1
- d) To change the one-shot code enter:
(MASTER CODE) + 5 (*status) + 2 + (ONE-SHOT CODE)
- e) To change the relay the one-shot code activates enter:
(MASTER CODE) + 5 (*status) + 3 + (RELAY #)
The Relay # corresponds to which relay to set. 1 = Relay A, 2 = Relay B.

Sub-Mode 6 (Set Relay Output Times)

To set or change a relay output time enter the following;

(MASTER CODE) + 6 + (RELAY #) + (RELAY OUTPUT TIME) in seconds

The Relay # corresponds to which relay to set. 1 = Relay A, 2 = Relay B. Should you make a code entry error, simply press the * key and enter the correct code. Your output time is set on both relays from the factory at approximately 1/2 seconds "00". If a longer output time is desired, enter a two digit number corresponding to the number of seconds between "00" and "99". By entering "00" the output time is set to approximately 1/2 seconds which is ideal for most operators.

Sub-Mode 7 (Program Relay B Access Codes)

To program new Relay B access codes enter the following;

(MASTER CODE) + 7 + (NEW CODE) + (NEXT NEW CODE)
etc..... (# to exit)

Should you make a code entry error, simply press the * key and enter the correct code. You may select any 4 digit code you wish. If you receive an *ERROR* after entry, you must select another code as it is already in use. The unit will respond with a *GOOD BEEP* with the acceptance of each new Relay B code. You may continue entering Relay B codes until you finish (Press #), or the memory becomes full. You will automatically be exited from the program mode if the memory reaches capacity. When memory is full you will not be able to enter this Sub-Mode and will receive an *ERROR* if entry is attempted.

Sub-Mode 8 (Enable/Disable 3 Strikes-You're Out)

EXPLANATION: This feature is desirable to keep unwanted persons from successively entering codes until they "hit" a programmed access code. By selecting this function you enable a 1 1/2 minute lock out period if 3 incorrect codes are entered successively within a 3 minute period. When this occurs, the *LED's* will flash and a high pitched alarm will be generated from the unit for 30 seconds. The unit will then shutdown for 1 minute.

To Activate the 3 strikes-you're out feature enter the following;

(MASTER CODE) + 8 (*current state) + (MASTER CODE)

*current state

single beep = 3 strikes enabled

double beep = 3 strikes disabled

Should you make a code entry error, simply press the * key and enter the correct code. After you have selected mode 8, the unit will respond with a single or double beep. A single beep indicates that the 3 strikes-you're out feature is presently enabled. A double beep indicates that the 3 strikes-you're out feature

is presently disabled. The unit will then issue a *GOOD BEEP* and wait for the master code. If you wish to Activate the 3 strikes your out state, enter the master code. If you do not wish to Activate the state, enter **#** to exit.

Sub-Mode 9 (Program Event Input)

EXPLANATION: The event input allows the user to tie in an external device to control specific functions of the unit. The event input can be programmed in 1 of 5 ways.

REMOTE INACTIVE: Relay A codes may be made inactive by an external switch. When inactive all relay A codes will be disabled. The relay B, program, and function codes will still be accessible to the end user.

ARMING CIRCUIT: This is normally used to allow access in parking situations. An external vehicle detector may be connected to the input. Relay A codes would only become active on the presence detect of a vehicle. If an entry attempt to activate relay A is made while the input is not activate, entry will be denied. The relay B, program, and function codes will still be accessible to the end user.

REMOTE OPEN: A relay may be activated using a pushbutton or switch. The relay to activate is user selectable. This function operates even when the unit is in sleep, latch, or program mode.

NIGHT LIGHT: This will turn on the unit night light for 60 seconds using a relay connected to a loop detector, electric eye, motion sensor, etc. You must move the Lights jumper from On to Event to use this output. See circuit board layout on page 7 for location.

DISABLE: Disables the Event Input.

- a) To program the event input as Remote Inactive enter the following;
(MASTER CODE) + 9 (*current event mode) + 1
- b) To program the event input as an Arming Circuit enter the following;
(MASTER CODE) + 9 (*current event mode) + 2
- c) To program the event input as Remote Open enter the following;
(MASTER CODE) + 9 (*current event mode) + 3 + (*Relay to Activate)

d) To program the event input as NIGHT LIGHT enter the following;
(MASTER CODE) + 9 (*current event mode) + 4

e) To DISABLE the event input enter the following;
(MASTER CODE) + 9 (*current event mode) + 0

*Current Event Mode

*Relay to Activate

Single beep = Remote Inactive Mode Enabled. 1 = Relay A.
Double beep = Arming Circuit Mode Enabled. 2 = Relay B.
Triple beep = Remote Open Mode Enabled.
GoodBeep Only = Event Input Disabled.

After you have selected mode 9, the unit will respond with tones as described above. This gives the current mode the event input is programmed as (See *Current Mode above). If you do not wish to Activate the state, enter **#** to exit. If you are programming the event input as a Remote Open input, you will be prompted for which relay to activate on an event. Enter the correct relay as stated above (*Relay to Activate).

Sub-Mode 0 (Erase all codes)

To erase all access & function codes, (except the master code), enter the following;

(MASTER CODE) + 0 + (MASTER CODE)

Should you make a code entry error, simply press the * key and enter the correct code. When the sequence is entered correctly, the *LED's* will flash several times and the unit will generate a *GOOD BEEP* when it has finished clearing the memory. If the above sequence is not validated by the unit you will receive an *ERROR* and immediately be exited from the program mode.

AN IMPORTANT NOTE: It should not generally be necessary to erase all the codes from memory unless codes are forgotten and are occupying necessary memory. A good log and maintenance of access codes should prevent this from ever needing to be done.

Support

Customer Service: (303) 799-9757

Customer service is available free of charge. Hours are 8:00 a.m. to 5:00 p.m. MST. If you call, please have your Model and Serial # to help our customer service personnel technicians assist you with any problems you have.

E-Mail: customerservice@americanaccess.com

Technical Support: (303) 799-9757

Technical support is available free of charge. Hours are 8:00 a.m. to 5:00 p.m. MST. If you call, please have your Model and Serial # to help our technicians assist you with any problems you have.

E-Mail: techsupport@americanaccess.com

Rev C